

Welcome to Murododaira: Ptarmigan Country!

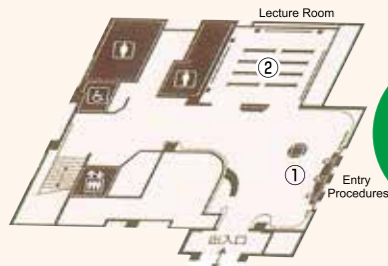


The Tateyama Nature Conservation Center is a place where visitors can learn about and experience the great outdoors in Tateyama. The Center offers exhibits and explanations about ptarmigans, alpine plants, and other unique living things, as well as information about exploring the Murododaira area. Visitors are also welcome to take part in free nature tours, led by naturalists.

Free Nature Tours

Enjoy a tour through nature, learning about the wonders of Ptarmigan Country while visiting places like Murododaira, Mikuriga-ike Pond, and more. Each of our nature tours is led by a naturalist. You can sign up to join tours on the 3rd floor.

Introduction

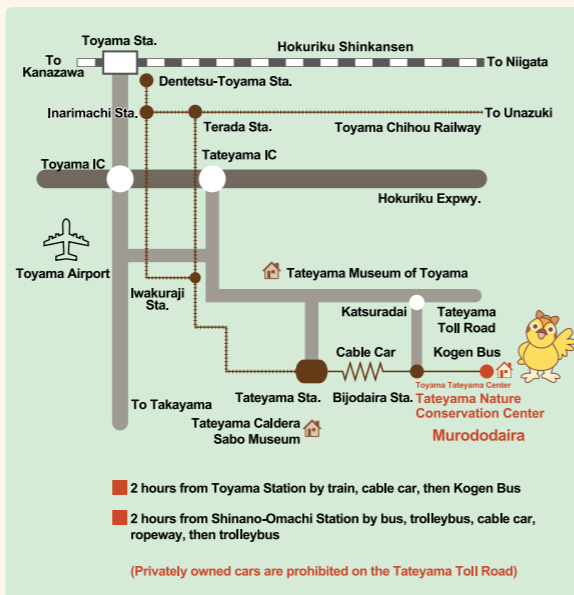


1F

- Handle entry procedures to Ptarmigan Country at the entrance.
- Watch high-definition videos of Tateyama's natural scenery, including plants and animals.
- Attend lectures and observation meets held here.



Access



Information

Season: Mid Apr. (Full opening date of the Alpine Route) to mid Nov. (Closed for winter)
Hours: 8:30 to 17:00 (8:00 to 17:00 Jul. 16 to Aug. 31)
Admission: Free
Address: Murododaira — Ashikuraji, Tateyama Town, Nakaniikawa District, Toyama Prefecture 930-1414
Tel: (076) 463-5401
Fax: (076) 463-5405
<http://tateyama-shizenhogo-c.raicho-mimamori.net/>

Chubusangaku National Park

Toyama Tateyama Center

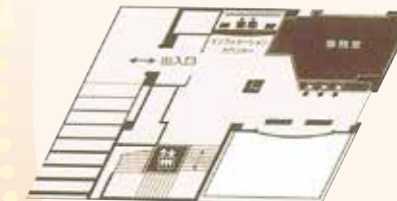
Tateyama Nature Conservation Center



Map of the Murododaira Area



Experiences



3F

- Get information about nature tours, and sign up for them.
- Get all sorts of information about Tateyama, covering alpine plants, mountain meteorology, mountain huts, and more.

Learning



2F

- Learn about ptarmigans and other animals that live here.
- Learn about the natural environment and history of Ptarmigan Country.
- Learn about rules and good manners to follow while you're in Ptarmigan Country.



Entry Procedures

Receive your "passport" to enter Ptarmigan Country.



Charter of Ptarmigan Country

Respect nature.
Love nature.
Live with nature.
Learn about nature.
Protect nature for generations to come.

1F

Now you're ready to enter Ptarmigan Country!



Lecture Room

Enjoy spectacular videos in four languages, featuring Tateyama's incredible natural scenery, as well as plants and animals like ptarmigans. From May through August, the Center also holds lectures and observation meets once a month.



History of the Tateyama Faith and the People who Have Supported Mountain Climbers

Learn about the religious history surrounding Mt. Tateyama, and about the people who have supported those who climb the mountain.

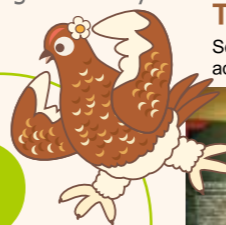


Ptarmigan Theater

See the remarkable color changes a ptarmigan's feathers go through from season to season.



A fun way to learn about the natural environment, history, and creatures of Ptarmigan Country!



2F



Ptarmigan Theater

Learn about rules and good manners to follow on the hiking courses and in rocky areas.



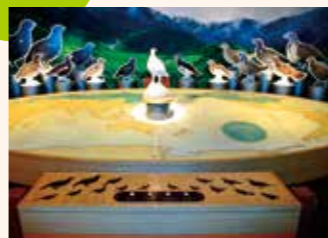
The Mysteries of Snow and Ice

Explore the mysterious world of snow and ice.



Ptarmigan Summit

Learn about where other ptarmigans live around the world, and their ways of life.



The Creatures of Mt. Tateyama

See how the various creatures who live here have adapted to the high altitudes.



Bird's-Eye View

Get an overview of Ptarmigan Country with a giant diorama and aerial video.



Time to head outside!
Before we do,
let's take a look at the map!

Mt. Tateyama Information Area

Use computers to find information about alpine plants, mountain huts, and more.



3F



Nature Tour Information and Ptarmigan and Stoat Sighting Information

Get information about nature tours, and sign up for them. If you've spotted a ptarmigan or a stoat, drop by and let us know! You'll even get a special sticker as thanks for sharing your sighting with us.

